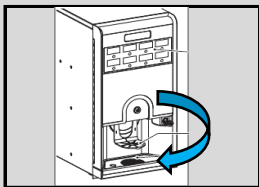




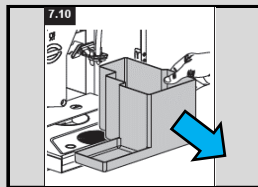
**Gebruikersmenu**



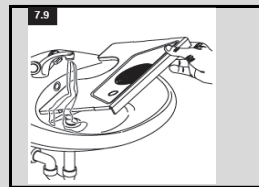
**Dagelijks**



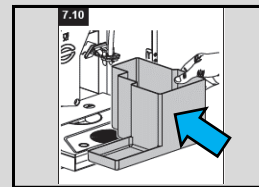
Open de deur



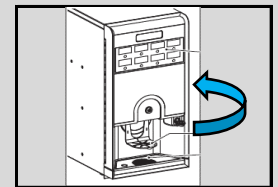
Leeg de afvalbak en reinig deze met zeep en water



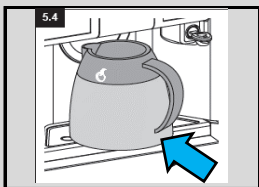
Leeg het lekblad en reinig deze met zeep en water



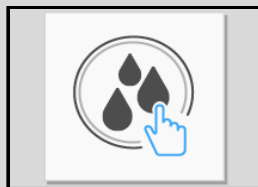
Plaats de drasbak en het lekblad terug



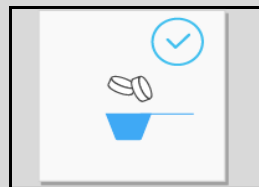
Sluit de deur



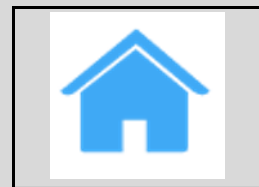
Plaats een kan of bak onder de uitloop



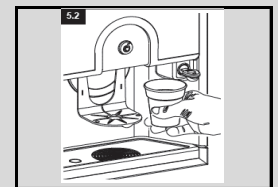
Ga naar het menu en druk op de spoeltoets



Reset de dras teller

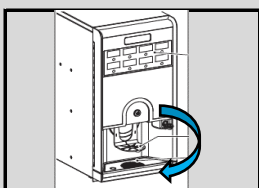


Druk op Home om af te sluiten

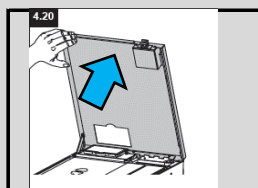


Uw machine is gereed voor gebruik

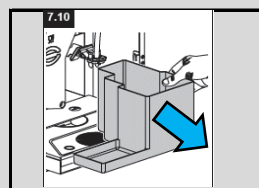
**Wekelijks**



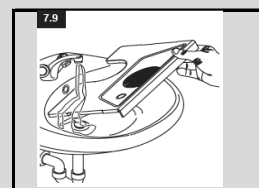
Open de deur



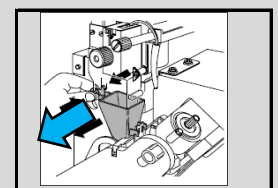
Open de deksel



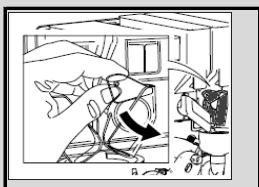
Leeg de afvalbak en reinig deze met zeep en water



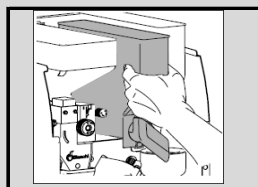
Leeg het lekblad en reinig deze met zeep en water



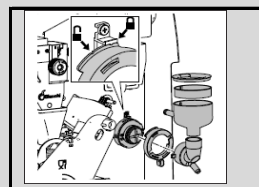
Demonteer de koffie-trechter en reinig deze



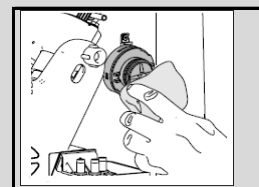
Sluit de uitlopen demonteer en reinig deze



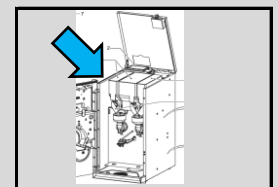
Verwijder kanisters ledig deze en vul ze opnieuw



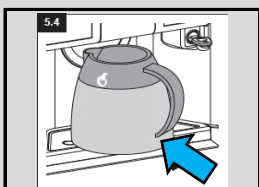
Demonteer de mixbeker en reinig deze



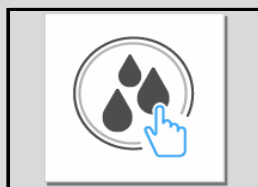
Reinig de mixer met een zachte vochtige doek



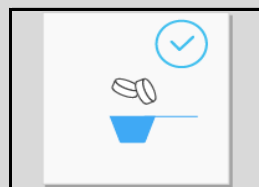
Monteer alle gereinigde onderdelen



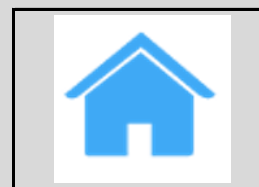
Plaats een kan of bak onder de uitloop



Ga naar het menu en druk op de spoeltoets



Reset de dras teller

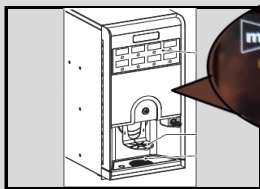


Druk op Home om af te sluiten

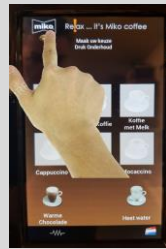


Uw machine is gereed voor gebruik

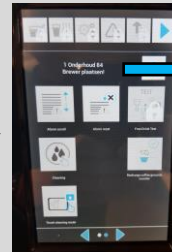
## Meldingen



Display toont  
"Druk onderhoud"

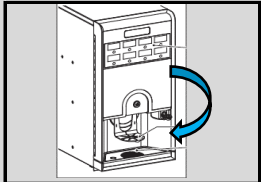


3 Sec.

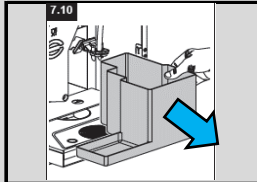


Lees de melding  
voor verdere  
instructie

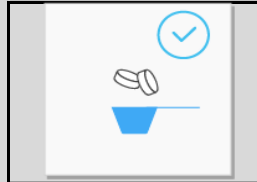
## Alarm afval



Open de deur



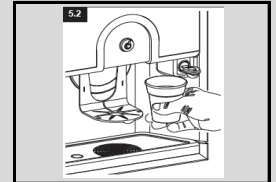
Leeg de afvalbak



Reset de dras  
teller

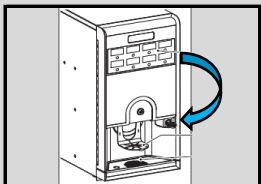


Druk op Home  
om af te sluiten

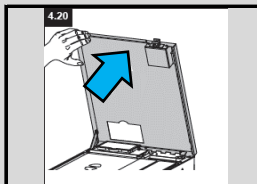


Uw machine is  
gereed voor gebruik

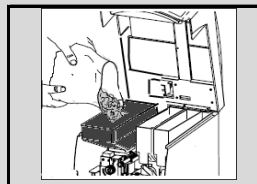
## Alarm bonen



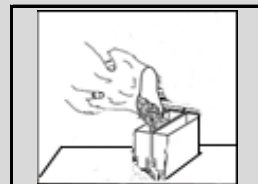
Open de deur



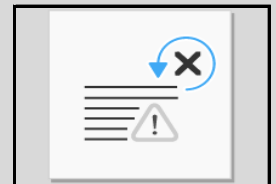
Open de deksel



Vul de bonen  
in het kanister



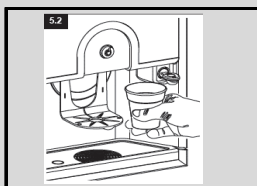
Vul topping & cacao  
buiten de machine



Reset  
Alarm

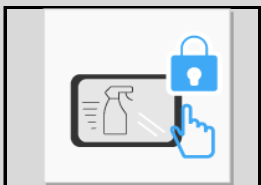


Druk op Home  
om af te sluiten



Uw machine is  
gereed voor gebruik

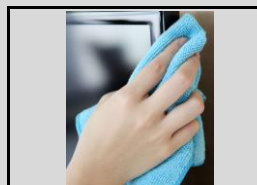
## Display reinigen



Druk op  
display reinigen



Scherm wordt  
vergrendeld



Reinig het display  
met een zachte doek



Druk 5 sec  
om te  
ontgrendelen



Druk op Home  
om af te sluiten

## Overige informatie



Reinig de onderdelen niet in de vaatwasser  
Zorg dat de automaat op een stabiele ondergrond staat  
Houd ruimte rondom de automaat voor ventilatie  
Kijk voor overige informatie op <https://mikocoffee.nl/manuals/>  
Tel: 040-201 9407 (voorkeuze 1)